

OP-926 HANGING SCALE



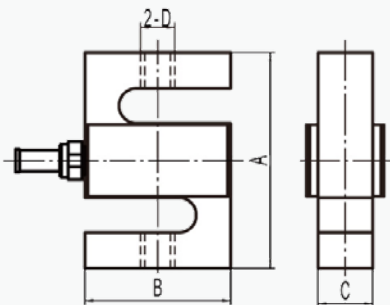
FEATURES

- Pre-calibrated with certified test weights per NIST's requirements
- More accurate than standard crane scale
- Bi-directional for both tension and compression
- Nickel plated IP67 corrosion resistant load cell
- ABS sealed indicator with LED or LCD display and rechargeable battery
- Peak hold and average hold features
- Selectable weighing units: lb, kg
- 19' load cell cable (longer cables available)
- Eye bolts included
- Optional RS232 port for printer or computer

PART#	CAPACITY	SHIP WT.
OP-926-50	50 lb x .01 lb/20 kg	6 lbs
OP-926-100	100 lb x .01 lb/50 kg	
OP-926-150	150 lb x .01 lb/70 kg	
OP-926-200	200 lb x .02 lb/90 kg	8 lbs
OP-926-250	250 lb x .02 lb/120 kg	
OP-926-300	300 lb x .02 lb/150 kg	
OP-926-500	500 lb x .05 lb/250 kg	9 lbs
OP-926-750	750 lb x .02 lb/340 kg	
OP-926-1000	1,000 lb x 0.1 lb/500 kg	
OP-926-1500	1,500 lb x 0.1 lb/750 kg	10 lbs
OP-926-2000	2,000 lb x 0.2 lb/1000 kg	
OP-926-2500	2,500 lb x 0.5 lb/1200 kg	
OP-926-3000	3,000 lb x 0.5 lb/1500 kg	11 lbs
OP-926-5000	5,000 lb x 0.5 lb/2500 kg	
OP-926-10K	10,000 lb x 1 lb/5K kg	
OP-926-15K	15,000 lb x 1 lb/7.5K kg	12 lbs
OP-926-20K	20,000 lb x 2 lb/10K kg	32 lbs
OP-926-40K	40,000 lb x 2 lb/20K kg	35 lbs

OPTIONS/ACCESSORIES

- Indicator Upgrade
- Waterproof hard case
- Scoreboard
- Indicator stand
- Software



RATED CAPACITY	DIMENSIONS				RATED CAPACITY	DIMENSIONS			
	A	B	C	D		A	B	C	D
	lb/inches					kg/mm			
50-200	2.50	2.00	0.75	1/4-28UNF-2B	25	63.50	50.80	12.70	M6
250-300	2.50	2.00	0.75	3/8-24UNF-2B	50-70	63.50	50.80	12.70	M6
500-1,500	2.50	2.00	1.00	1/2-20UNF-2B	100-700	63.50	50.80	19.05	M12
2K-3K	3.00	2.00	1.00	1/2-20UNF-2B	1,000-1,500	76.20	50.80	25.40	M12
5K-10K	4.25	3.00	1.25	3/4-16UNF-2B	2,000-5,000	107.95	76.20	25.40	M20x1.5
15K	5.50	4.00	1.25	1-12UNF-2B	7,000	139.70	101.60	31.75	M20x1.5
20K	7.00	5.00	2.00	1 1/4UNF-12UNF-2B	10,000	177.80	127.00	50.80	M30x2
40K	7.50	5.50	2.50	1 1/2UNF-12UNF-2B	20,000	190.50	139.70	63.50	M38

