

## OP-927 TENSION LINK SCALE



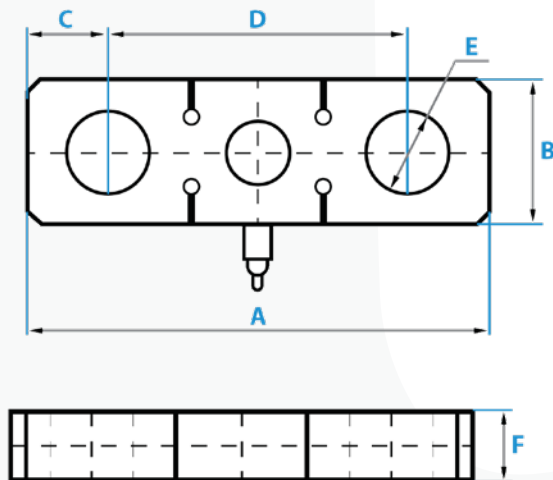
PART#	CAPACITY	SHIP WT.
OP-927-25K	50,000 lb x 10 lb	30 lbs
OP-927-50K	50,000 lb x 10 lb	33 lbs
OP-927-100K	100,000 lb x 50 lb	46 lbs
OP-927-150K	150,000 lb x 100 lb	75 lbs
OP-927-200K	200,000 lb x 100 lb	95 lbs
OP-927-250K	250,000 lb x 100 lb	95 lbs

### FEATURES

- Cost effective solution for processing, monitoring and controlling overhead loads
- Used with shackles to measure force
- Designed to measure high capacity load for cranes, hoists and winches
- Nickel plated IP67 corrosion resistant load cell
- ABS sealed indicator with LED or LCD display and rechargeable battery
- Peak hold and average hold features
- Selectable weighing units: lb and kg
- 26' load cell cable (longer options available)

### OPTIONS/ACCESSORIES

- Indicator Upgrade
- Waterproof hard case
- Scoreboard
- Indicator stand
- Software



RATED CAPACITY	DIMENSIONS					
	A	B	C	D	E	F
<b>lb/inches</b>						
25K lbs	11.15	3.55	7.21	1.87	1.50	1.97
50K lbs	12.53	4.33	8.27	2.01	1.69	2.13
100K lbs	16.55	5.12	11.82	2.81	1.97	2.36
150K lbs	19.70	6.30	13.79	3.15	2.36	2.96
200K lbs	21.67	6.70	14.97	3.80	2.76	3.35
250K lbs	23.64	7.09	15.76	4.02	3.15	3.94
<b>kg/mm</b>						
4,536-18,144 kg	283.00	90.00	183.00	50.00	38.00	50.00
22,680 kg	318.00	110.00	210.00	51.00	43.00	54.00
45,360 kg	420.00	130.00	300.00	71.40	50.00	60.00
68,040 kg	500.00	160.00	350.00	80.00	60.00	75.00
90,720 kg	550.00	170.00	380.00	96.40	70.00	85.00
113,400 kg	600.00	180.00	400.00	102.00	80.00	100.00

