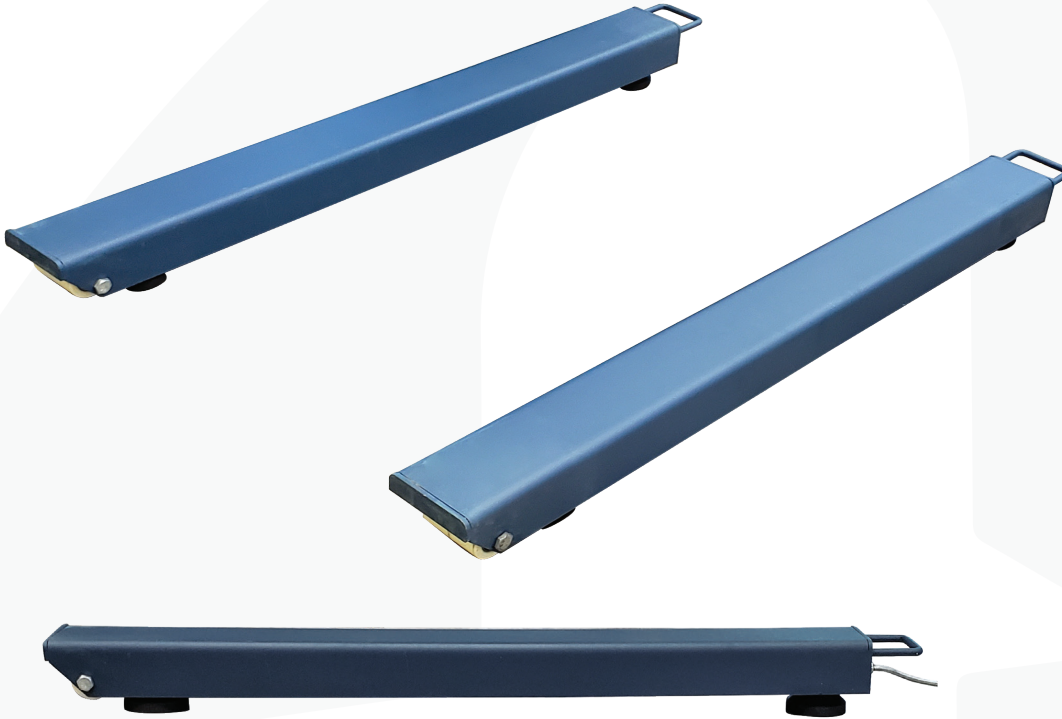




OPTIMA SCALE MANUFACTURING INC.

9030 BRIDGEPORT PLACE
RANCHO CUCAMONGA, CA 91730
800.360.9619 | SALES@OPTIMASCALE.COM

OP-919 WEIGHING BEAMS



**MOUNTING
BRACKETS**
OPTIONAL



**OP-909
INDICATOR**

Optima's weighing beam scales are portable and easy to store when not in use. They can be spread apart to handle long or unusual shaped loads and are used in many industries such as warehouses, farms and zoos. Our indicator features an animal weighing function that produces an accurate reading no matter how lively the animal is. Simply mount a platform, crate or chute on top, to transform these beams into a customized animal weighing scale.

FEATURES

- This portable yet heavy duty weighing beam system is perfect for tight spaces and can easily be stored or put into the back of a truck
- 100% welded steel construction & powder coated finish
- Integrated with carry handles and wheels for easy transportation
- Can be used to weigh just about anything that can be placed on top of them, such as small cages or storage containers
- 20' quick connecting stainless steel mesh shielded cable attaches to our T900 stainless steel indicator
- Four NTEP approved alloy steel nickel plated anti-corrosion load cells offer 200% overload protection
- Order includes 2 weigh bars, an indicator and 4 steel leveling feet with anchoring holes
- Tru-Test scales are designed specifically for livestock animals moving around or in rugged conditions, meaning livestock can move freely while on the scale but measurements will still be accurate



Model #	Cap. x Accuracy	Beam Size	Height	Material	Ship Wt.
OP-919-24-5k	5,000 x 1lb	24"(L) x 4"(W)	3.7"	Carbon Steel	65 lbs
OP-919-40-5k	5,000 x 1lb	40"(L) x 4"(W)	3.7"	Carbon Steel	85 lbs
OP-919-48-5k	5,000 x 1lb	48"(L) x 4"(W)	3.7"	Carbon Steel	95 lbs
OP-919-48-10k	10,000 x 2lb	48"(L) x 4"(W)	4"	Carbon Steel	110 lbs
OP-919-60-20k	10,000 x 2lb	60"(L) x 5"(W)	4"	Carbon Steel	145 lbs

CORPORATE HEADQUARTERS
9030 BRIDGEPORT PL.
RANCHO CUCAMONGA, CA 91730

800.360.9619 | SALES@OPTIMASCALES.COM

ADVANCED MANUFACTURING & INNOVATIONS FACILITY
1800-1900 NORTH COLLINS FWY
HOWE, TX 75459 USA

WWW.OPTIMASCALES.COM

