

We hope our products will bring you greater convenience!

Electric Pallet Truck(Scale)

Operation Manual



- Before you use the electric pallet truck please read the operation manual carefully and fully understand the use of the electric pallet truck, improper operation may cause danger.
- Please take care of it for future use and contact your local dealer for a replacement if this operation manual or warning / warning label is damaged or lost.
- This manual is a general manual, we reserve the right to make technical changes to the electric pallet truck, if the content of the manual does not match the physical, please refer to the physical, for non-standard electric pallet truck, the possibility is greater, the manual is only for reference.

Warning

- Operators must strictly implement ISO3691 "Safety Code for Motorized Industrial Vehicles".
- It is strictly forbidden to operate electric pallet truck by untrained personnel.

Table of Contents

1. Shape drawing	1
2. Main technical parameters	2
3. Use and scope of use	3
4. Instructions for use and operation	3
4.1 Power switch	4
4.2 Combination lock	4
4.3 Handle Monitor	5
4.4 Emergency reverse switch	6
4.5 Do not overload use, the maximum load is 2000KG	6
4.6 Travel and Braking	7
4.7 Charging jack	8
4.8 Vehicle travel steering	9
4.9 Scale	10
5. Battery use and maintenance	13
6. Fault code	14
7. Hydraulic schematics	15
8. Electrical schematics	16
9. Packaging, shipping	17
10. Warning (Caution)	17
11. Handle assembly	19
12. Driver components	20
13. Front frame assembly	21
14. Connecting rod assembly	22
15. Rear frame assembly	23

1. Shape drawing

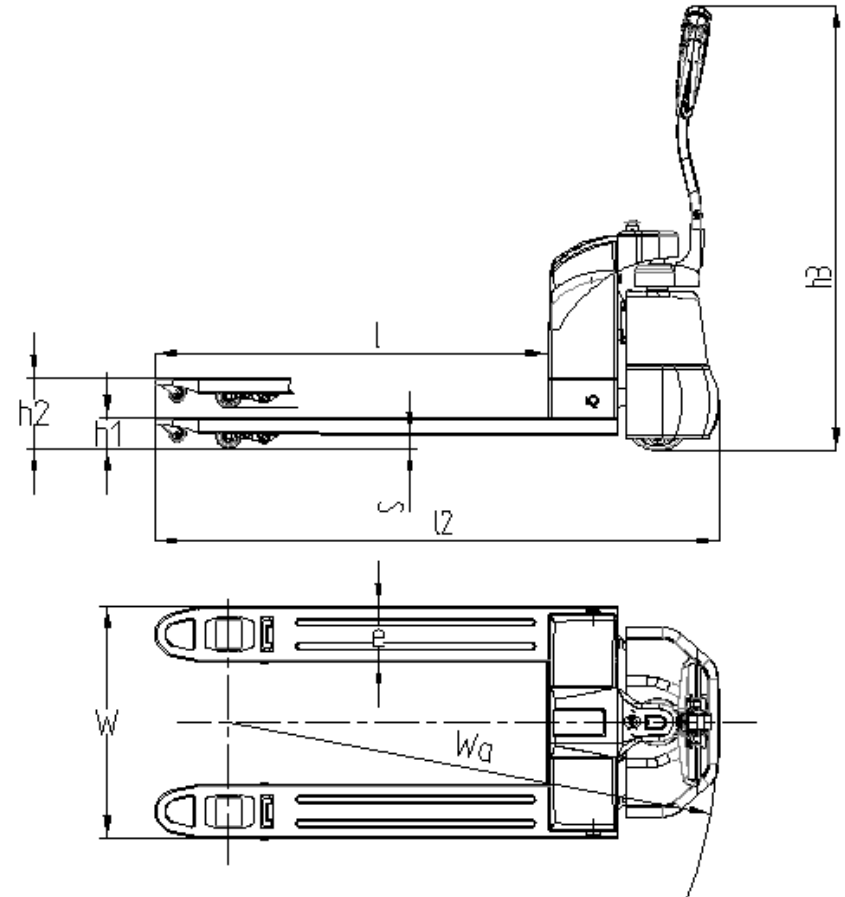


Figure 1-1

2. Main technical parameters

Model		T918
Rated load	(kg)	2000
Power		Electric
Operation Type		Walking Style
Load Center	c(mm)	600
Minimum fork height	h1(mm)	75
Maximum fork height	h2(mm)	185
Fork size	s/e/l(mm)	50/160/1220
Fork width	w(mm)	550/680
Height above ground	M(mm)	25
Front wheel specification (PU)	(mm)	Φ70*60
Front wheel specification (PU)	(mm)	Φ190*70
Minimum turning radius	Wa(mm)	1430
Total length	l2(mm)	1700
Total height	h3(mm)	1350
Battery voltage/rated capacity	(V/Ah)	48V/30Ah
Charger	(V/A)	48V/5A
Self-weight	(kg)	232
Travel speed, full/no load	Km/h	4/4.2
Climbing capacity, loaded/unloaded	%	8/16
Travel brake		Electromagnetic -
Drive motor power	kw/v	0.85/48
Lift motor power	kw/v	0.8/48
Driver's ear noise according to EN12053	dB(A)	<70

3. Use and scope of use

T918 electric pallet truck(scale) , It is the use of battery as the power source, with AC drive system, the implementation of electric driving and lifting. It has the characteristics of labor-saving, light, efficient, smooth, simple operation as well as safe and reliable, low noise, no pollution, etc.

Use environment.

a. The electric pallet truck is suitable for indoor use on hard and flat ground, not suitable for use on slope and uneven ground. There should be no bumpy pits and gravel debris on the ground that affect wheel rolling.

b. Altitude not exceeding 1200 meters.

c. The ambient air temperature shall not exceed +40°C and shall not be less than -25°C.

d. Relative humidity not exceeding 50% when the ambient temperature is +40°C. At lower temperatures, a higher relative humidity is allowed.

e. It is prohibited to use this pallet truck in corrosive environments such as flammable and explosive or acid and alkali.

f. It is prohibited to use the vehicle alternately in two environments with large temperature differences.

4. Use and operation instructions

Please observe the warnings and safety instructions before operating this cart, and make sure that the goods are placed on the pallet and remain stable.

Correct use and operation of the vehicle will bring great convenience to your work, if you take the incorrect operation method and use the vehicle, will damage the vehicle or bring danger to your personal safety and cargo.

Carry out daily inspection, before use, please check whether the pallet truck is normal: hydraulic pipeline has no oil leakage, whether each group of wheels can be intact and normal, there is no jamming phenomenon, it is strictly prohibited to use a faulty vehicle.

4.1 Power switch

This pallet truck is equipped with an emergency stop switch, which is the basic control of this vehicle and is located on the top of the vehicle body, see Figure 2-1.

Lightly press the emergency stop switch to turn off the power, the vehicle can not travel. Pull upward, then the button will automatically move up, i.e., turn on the main power of the vehicle. Press the off button again, the power is cut off.

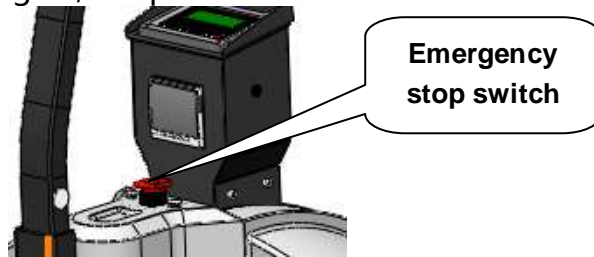


Figure 2-1

4.2 Combination lock

The vehicle is equipped with a password lock function, before entering the authorized password, the machine will not be allowed to start, in order to prevent unauthorized people from operating the machine, password lock function can not only facilitate the use, but also help the machine to prevent theft and improve security.

Electronic handle handle will enter the standby state after power on, LCD back light off, according to the handle configuration, the screen displays the corresponding hour meter and power information, need to use the correct password to unlock, then the LCD back light will be lit, in order to manipulate the vehicle to work normally.

The factory default password for the password lock is 1234, the operating vehicle can directly use this password to start the vehicle, the factory default administrator password is 3232, refer to the following steps to enter and change the password.

In standby mode, enter 1234 and press √ to confirm, you can enter X to rewind one character if you make a mistake.

To change the password in standby mode, enter 3232 and press the √ key to confirm.

Enter the original password and press the √ key to confirm.

Enter the new password again and press the √ key to confirm, the original password will be overwritten.

If you forget your password, you can use the security code to reset your password.

In standby, enter 123 and press √ to confirm.

Then enter 123 and press √ to confirm, the password is reset to 1234

4.3 Handle display

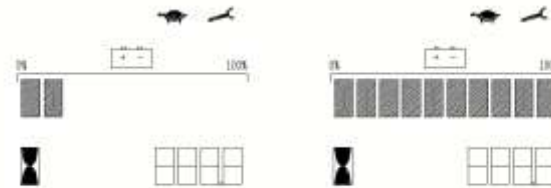




Figure 2-2 Figure 2-3


Battery charge indication.

Figure 2-2 shows the display after the battery is discharged. The last two cells flash when the battery is at its lowest level and needs to be charged in time.

As Figure 2-3 shows the battery full cell (10 cells) each cell represents 10% of the power, as the battery is discharged, the number of cells shown gradually decreases.

 Turtle speed: Under normal circumstances, turtle speed is in the state of no display, press the turtle speed button, the display shows turtle, at this time for the vehicle turtle speed state, speed deceleration mode, the

 Wrench: When the wrench is displayed, the need for repair and right fault code flashing is displayed.

 Hourglass: When the hourglass symbol flashes, it is in working condition, at which time the hour meter starts to count.

4.4 Emergency reverse switch

The red button at the top of the handle is the emergency reverse switch, as shown in Figure 2-3.

The emergency reverse switch prevents the operator from being crushed. Press the button and the vehicle slows down and begins to travel a distance to the rear BW and then stops.

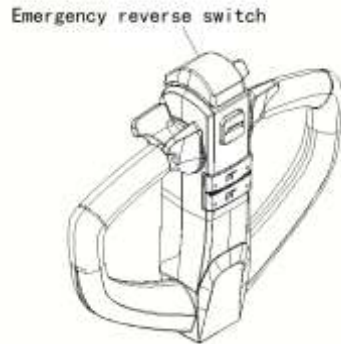


Figure 2-3

4.5, please do not use overload, the maximum load is 2000KG

Up, down switch and horn button, see Figure 2-4
Up button is located in the middle of the upper part of the tiller as shown in the figure, press this switch, the fork for rising movement.

The lowering button is located in the lower middle of the tiller as shown in the figure, press this switch, the fork for lowering movement.

The horn button is located above the middle of the tiller as shown in the picture, press this switch to pronounce the horn.

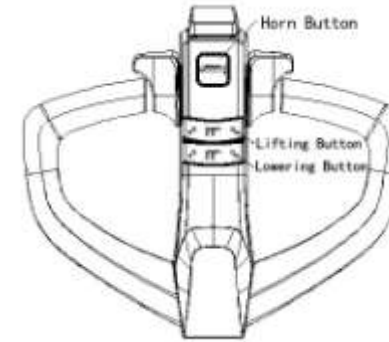


Figure 2-4

4.6 Traveling and braking (as in Figure 2-5)

The handle is divided into three areas A, B and C in the vertical plane.

If the handle is in area A or C, the vehicle is under braking.

Moving the handle to area A or C while driving puts the vehicle under emergency braking.

Move the handle to operation area B, the vehicle is in normal travel. Move the gas pedal knob to the 0 position or release this knob, regenerative braking is activated and the vehicle brakes to a stop.

Turn the gas pedal knob to the direction forward FW. or backward BW. and carefully turn the gas pedal knob to control the driving speed until the desired speed is reached.

If the gas pedal knob is returned to the middle position, the controller decelerates the vehicle until it stops.

Move the handle to the A area, press the turtle speed button to enter the turtle speed driving mode, rotate the acceleration knob will drive at a slow speed, press the turtle speed button again, it will return to the original state.

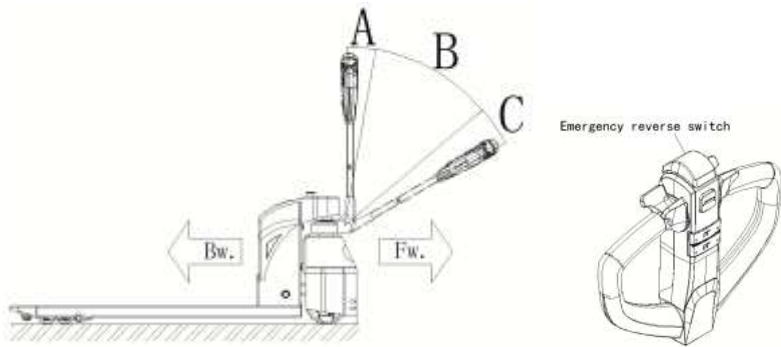


Figure 2-5

4.7 Charging jack

The charging port is located on the right side of the vehicle, as shown in Figure 2-6, and is related to the charger placed in the vehicle.

The car is an external charger, that is, there is no charger in the vehicle, charging port for the two-prong socket, charging with the need for an external charger, the charging port should be connected with the external charger of the compatible plug.

It can only be charged with the included charger.

Before using the charger, please fully understand the contents of the instruction manual of the charger.

Please observe these rules.

The charging area must be well ventilated.

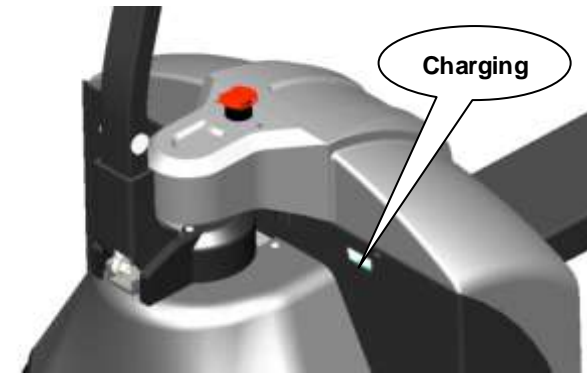


Figure 2-6

4.8 Vehicle driving steering

The direction of vehicle travel is controlled by the handle. See Figure 2-7 shows

- a Turn the handle in a flat direction to the left and the vehicle turns left.
- b Turn the handle in a flat direction to the right and the vehicle turns right.

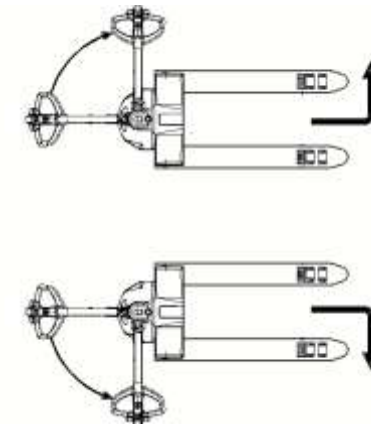


Figure 2-7

4.9 Scale






4.9.1 Main Function

- » Basic weighing functions: zeroing, tare function
- » Accumulation function
- » Printer
- » Unit exchange function
- » Checkweighing function
- » Battery voltage indication
- » Auto power off and power saving function

4.9.2 Parameters

- » Sensor excitation voltage : +3.3VDC
- » A/D exchange rate : 10 次/秒
- » Input Signal Range : 0—12.8Mv
- » Load capacity: up to four 350 ohm sensors
- » Unit : KG
- » Calibration divisions : 3000e
- » Selectable indexing values : 1/2/5/10/20/50
- » Indicator : LCD
- » Keyboard: 5 function keys
- » Working Temp. : -10~40°C
- » Storage Temp. : -20~+60°C

4.9 Key function

Key icon	Key name	Key function
	ON/OFF	Long press 3 seconds for starting up when the instrument is in OFF status. Long press for 3 seconds for shutdown when the instrument is in ON status.
	Accumulation key	1.Accumulation operation 2.See the cumulative sums with SET key
	Unit key	Unit switch between Kg and Ib.
	Zero setting key	The instrument has zero clearing within allowable zero clearing range. Tare beyond the zero clearing range. Article weight is the tare and displays the net weight zero.
	Function key	1. Calibration with switch key combination 2.Long press for print. 3.Cumulative sum with TOTAL key combination

4.9.1 ON/OFF

Press ON/OFF key for 3 seconds in OFF status. The instrument will display 888888. It then will have self checking of the number of strokes. The instrument will display the current weight after the self-checking.

4.9.2 Zero setting

Press the zero setting tare function if it exceeds the zero range. The instrument will display the net weight zero. The instrument is not able to have tare operation when the scale is in dynamic status and the stable light is not on.

The current weight of the instrument will be cleared to zero and the instrument will display the gross weight zero when the zero setting key is pressed with permissible range of zero setting. The instrument cannot be cleared to zero when the scale is in the dynamic status and the stable light is not on.

4.9.3 Unit switch

Press the unit key for the weight switch between kg and lb when C12=1. It is invalid to press the unit key when C12=0.

4.9.4 Print

Press the function key for 1 second and output the current weight from the serial port in data stabilization.

4.9.5 Accumulative total

Accumulative total of the several weighing data.

4.9.6 Cumulative operation

Load the weighted object on the weighing platform in zero position to reach a stable state. Press the "cumulative" key to enter the cumulative status. It will display n001 and then the weight this time. Then unload the weighted object. Then reload the weighted object to reach the weighing status after it returns to the zero position. Press "cumulative" button. It will display n002 and weight this time. It will reach 999 accumulative total after the cyclic operation.

5. The use and maintenance of the battery

1, timely replenishment of electricity, to ensure that the battery is in a full state of charge, do not let the battery power consumption to the vehicle can not move before considering charging, excessive discharge will damage the battery.

2, often check whether the connection parts are solid, the terminal surface is clean, to ensure good contact.

3, When cleaning the surface of the battery, please do not use dry cloth and fiber wipe, in order to prevent the generation of static electricity and cause an explosion.

4, It is strictly forbidden to put metal conductive objects near the battery terminals to avoid short-circuiting and firing of both poles and burning the battery.

5, It is forbidden to use the method of battery short circuit firing to check whether the battery has power.

6, long-term use, the battery should be removed or disconnected from the negative battery wire. The battery should be fully charged and stored in a dry, frost-free place. Once a month, the battery needs to be balanced and replenished to ensure that the battery can be put into use at any time.

7, Please use the charger that comes with the car, do not use other chargers, otherwise it will damage the battery.

8, Prevent the external mechanical force from hurting the battery.

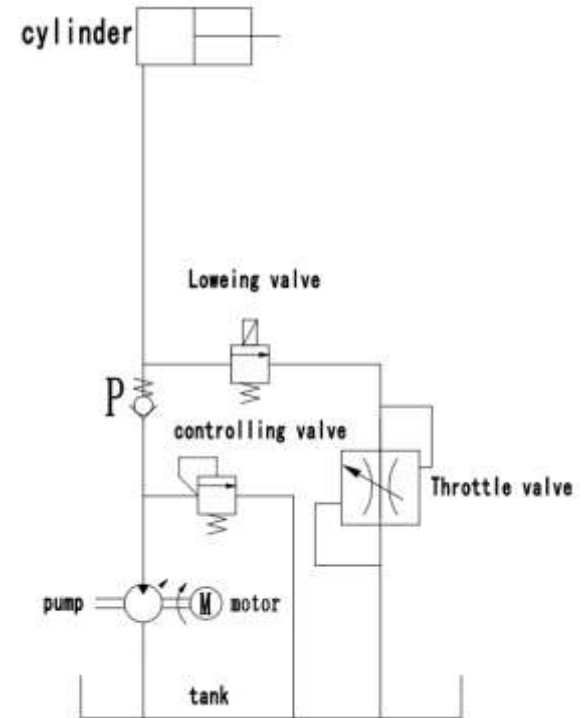
9, Replace the battery should be consistent with the original, random replacement may be harmful to the vehicle.

10, Waste battery disposal must strictly comply with the local regulations recycling treatment, shall not be arbitrarily discarded.

6. Fault codes

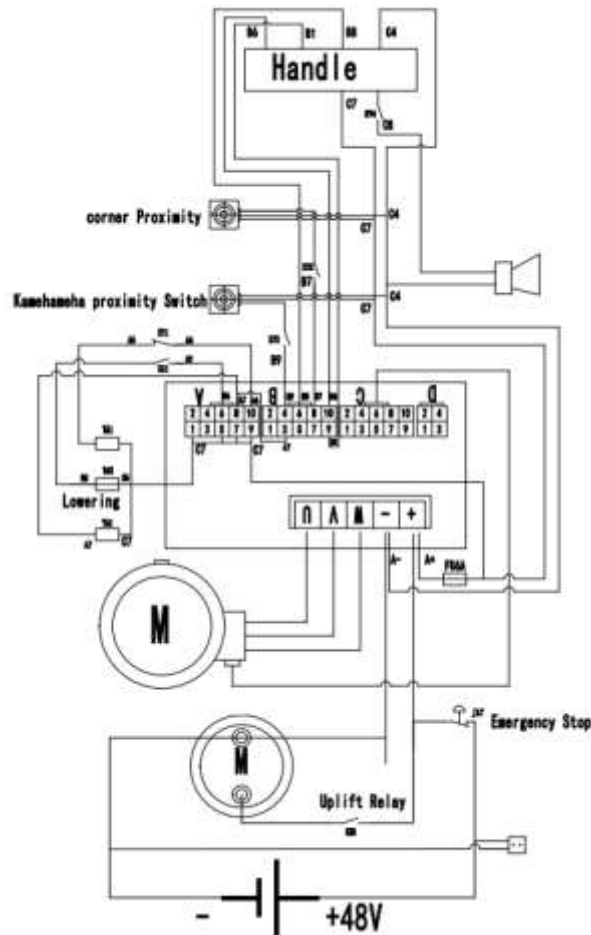
Fault Code	Fault	Possible causes of failure	Solution
20E002	Short circuit, overcurrent	Parking brake	Check the motor connection for short circuit; check the motor insulation; replace the driver;
20E003	High pressure	Parking brake	Check if the battery specification matches;
20E004	Abnormally high pressure	Parking brake	Avoid slamming downhill braking with heavy loads ;
20E005	Low pressure	Parking brake ; After the handle is reset, the next operation is performed at a lower speed;	Check battery voltage and charger
20E006	Abnormally low pressure	Parking brake	Check battery voltage and charger; Check the battery cable, whether it is loose
20E007	High temp	Parking brake; After the handle is reset, run at lower speed and lower torque; if the temperature is lower than the alarm value, the handle will be reset and normal operation will resume;	Avoid exposing the pallet truck to high temperatures; avoid prolonged overloads
20E011	Overcurrent, loss of control	Parking brake	Check the motor and encoder connection; whether to match the motor; replace the driver;
20E012	Overload	Parking brake; After the set time and the handle is reset, normal operation is resumed after the alarm value is lower than the alarm value;	Avoid prolonged overload;
			Verify that the driver and motor are adaptive;
20E013	Blocking and turning	Parking brake	Check whether the drive wheel is stuck, etc.; check the motor V, W connection sequence;
20E014	phase break	Parking brake	Please check the motor connection
20E019	Holder disconnection	Parking brake	Check the brake holder connection
20E020	Holder Short circuit	Parking brake	
20E021	Encoder Hall signal abnormal	Parking brake	Check encoder wire; Replace encoder; Replace driver; Replace drive wheel
20E026	Abnormal accelerator command signal	Parking brake	Handle signal is not in the normal setting range; handle type setting of the driver parameter error; check the connection between the handle and the driver
20E029	Anti-Flyer	Parking brake; When the handle is released back to the neutral position, it will return to normal	The handle is not in neutral position when the power is turned on or after emergency reverse operation
20E032	Handle CAN communication abnormality	Parking brake	Confirm the connection; confirm whether the parameter settings match

7. Hydraulic schematic



Hydraulic schematic

8. Electrical schematic



9. Packaging, transportation

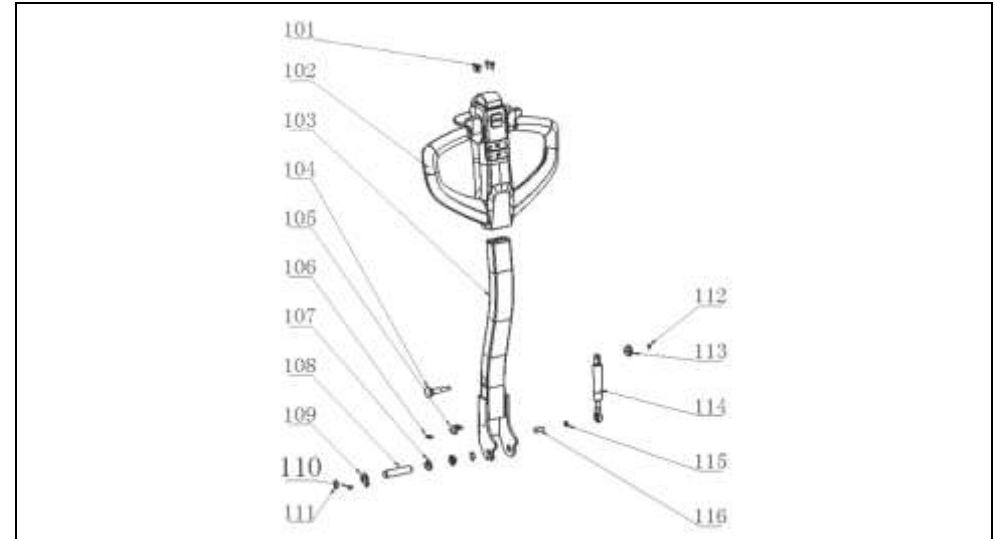
The vehicle is packed in palletized wooden boxes, which are not allowed to be overturned or inverted during transportation, and are not allowed to collide when lifting and loading, and do not damage the outer surface of the vehicle when unpacking.

10 . Warning (Caution)

- (1) Before operating the car, please read the instructions and get familiar with the performance of the car.
- (2) To avoid damage to the goods and the car, please do not press the up-down button or switch the up-down button quickly and frequently while the car is running.
- (3) This car is an electric cart without the need for rapid and high frequency form shaking the handle!
- (4) Do not load heavy objects onto the forks in a hurry!
- (5) strictly prohibit the use of overload, do not carry additional weight, do not exceed the operating load, the chances of accidents occurring in this behavior is high.
- (6) The center of gravity of the cargo should be among the two forks, otherwise it may damage the forks or cause the cargo to fall down during operation.
- (7) Loose or unstable cargo is not allowed to be loaded!
- (8) Do not rest the cargo on the car for a long time!
- (9) is strictly forbidden to make sharp turns in narrow passages, when you should slow down and turn slowly to ensure the safety of people and goods.
- (10) When the truck is not in use, the forks should be lowered to the lowest position.
- (11) It is strictly forbidden to place any part of the body under heavy objects and forks!
- (12) This truck is suitable for use on flat ground or flat working platform, and long-term parking on slopes is strictly prohibited.

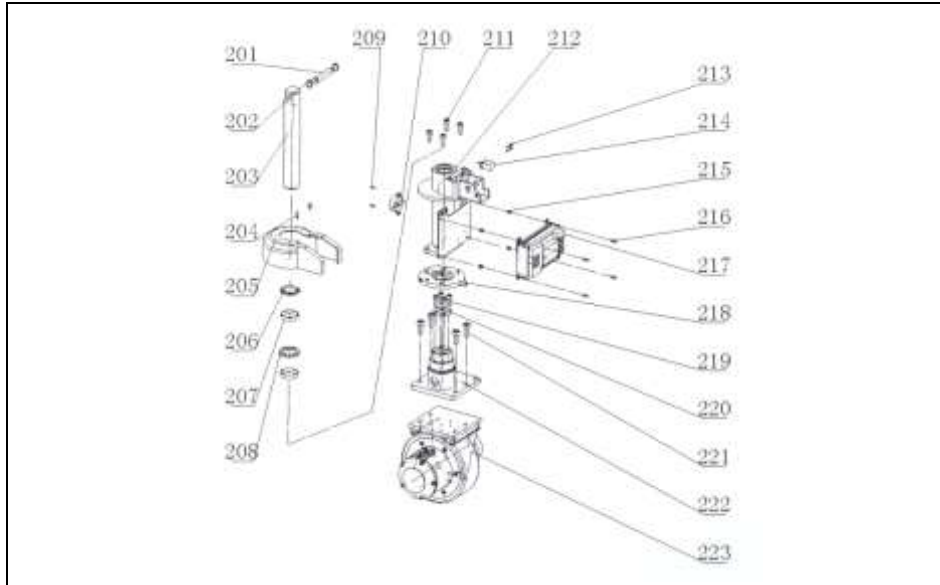
- (13) Overload or over-ramp operation is strictly prohibited. Otherwise, it will cause wheel slippage and damage the wheels and motor as well as the cargo and personal safety.
- (14) the vehicle socket should avoid showering rain, once encountered water intrusion, should be promptly wipe clean.
- (15) Use of the vehicle below low voltage is strictly prohibited.
- (16) The vehicle is strictly forbidden to connect directly to external AC power unless it has a built-in charger.
- (17) This car is a walking electric truck, for your image and safety, please do not drive.
- (18) without training, it is strictly prohibited to repair themselves.

11、 Handle assembly



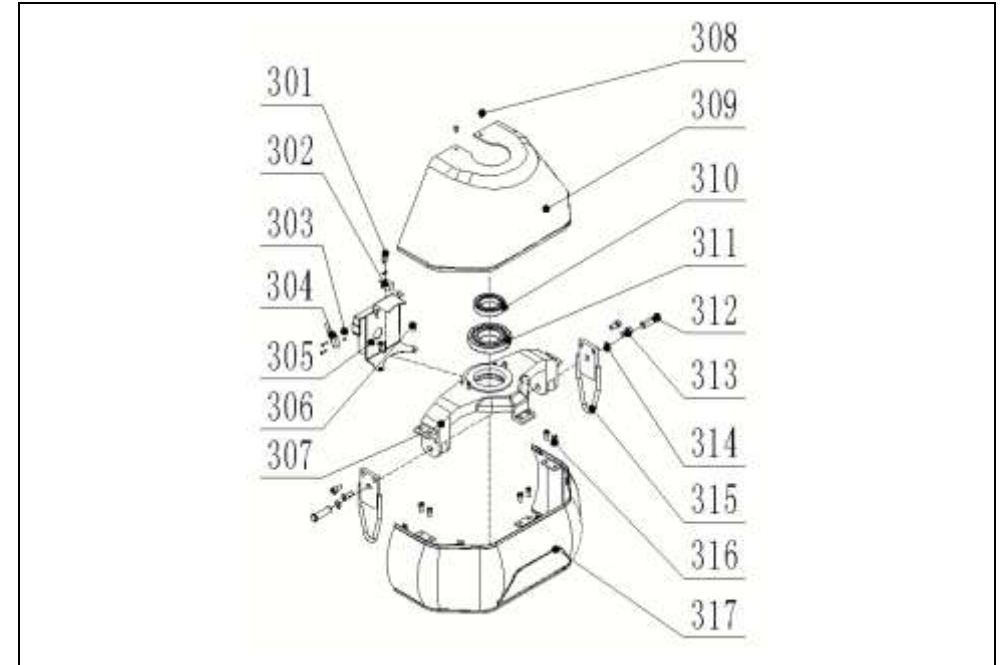
Number	Name	Quantity	Remarks
101	Screws	4	
102	Handle	1	
103	Handle bar	1	
104	Long Sales	1	
105	Line Holder	1	
106	Screws	2	
107	Bushing	2	
108	Pins	1	
109	Sensor board	1	
110	Screws	1	
111	Shaft stop	1	
112	Shaft stop	1	
113	Short axis	1	
114	Gas Spring	2	
115	Washers	1	
116	Screws	1	

12、 Drive components



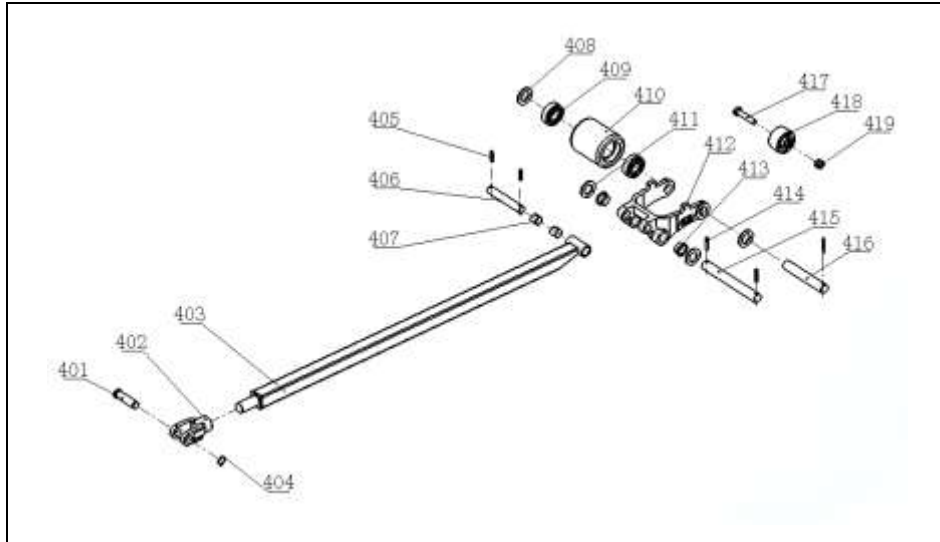
Number	Name	Quantity	Remarks	Number	Name	Quantity	Remarks
201	Pins	1		213	Screws	2	
202	Shaft stop	2		214	Proximity Switches	1	
203	Piston rod	1		215	Nuts	4	
204	Screws	2		216	Screws	4	
205	Small cover shell	1		217	Electric control	1	
206	Dust ring	1		218	Press board	1	
207	Guide Belt	1		219	Screws	4	
208	Seals	1		220	Adjustment pads	1	
209	S Screws	1		221	Screws	4	
210	Horn	1		222	Drive Block	1	
211	Screws	4		223	Drive assembly	1	
212	Cylinder barrel	1					

13、 Front frame assembly



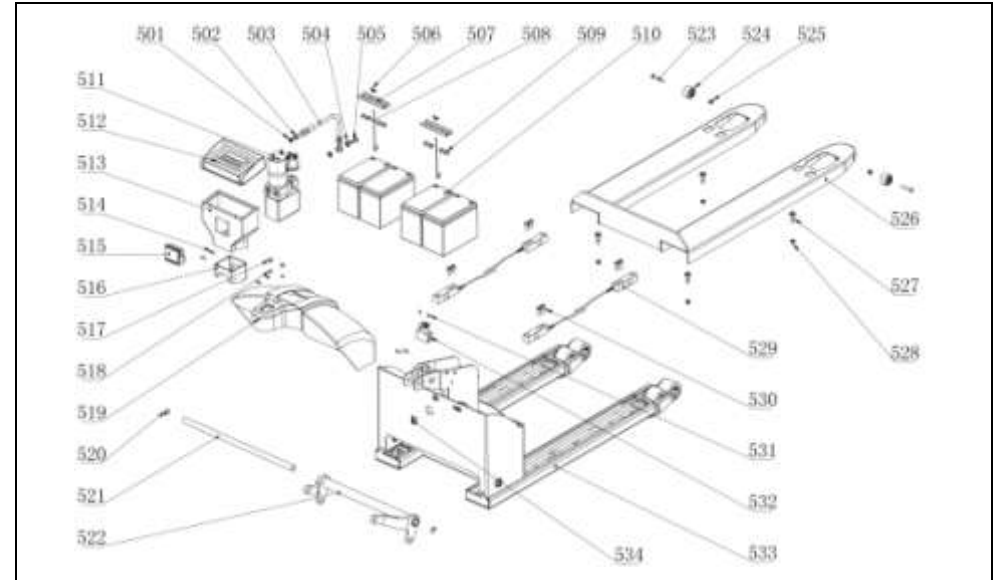
Number	Name	Quantity	Remarks	Number	Name	Quantity	Remarks
301	Screws	4		310	Bearings	1	
302	Switch	1		311	Bearings	1	
303	Nuts	4		312	Pins	2	
304	Switch	1		313	Screws	4	
305	Baffle	1		314	Shaft stop	2	
306	Screws	2		315	Support bar	2	
307	Support seat	1		316	Screws	6	
308	Screws	2		317	Surrounding frame	2	
309	Front Cover	1					

14、Connecting rod assembly



Number	Name	Quantity	Remarks	Number	Name	Quantity	Remarks
401	Pins	2		411	Bushing	4	
402	Connection head	2		412	Wheel carrier	2	
403	Connecting rod assembly	2		413	Bushing	4	
404	Shaft stop	2		414	Flexible pins	6	
405	Flexible pins	4		415	Pins	2	
406	Pins	2		416	Pins	2	
407	Bushing	4		417	Screws	2	
408	Connection plate	4		418	Fork Wheel	2	
409	Bearings	4		419	Nuts	2	
410	Fork Wheel	4					

15、Rear frame assembly



Number	Name	Quantity	Remarks	Number	Name	Quantity	Remarks
501	Combination Gasket	1		518	Washers	2	
502	Connector	1		519	cover	1	
503	Oil pipe	1		520	Retainer	2	
504	Combination Gasket	2		521	Pin	1	550/685
505	Hollow bolt	1		522	rocker	1	550/685
506	Butterfly Nut	2		523	External hexagon	2	
507	Pressure plate	2		524	roller	2	
508	hook	2		525	nut	2	
509	Rubber pad	8		526	Plate	1	
510	battery	4		527	Stud	4	
511	pump	1		528	nut	4	bushing
512	Gauge	1		529	Sensor	4	
513	Gauge box	1		530	Hexagonal	8	
514	Hexagonal	8		531	Screws	2	
515	Printer	1		532	Emergency stop	1	
516	Connet frame	1		533	Fork frame	1	
517	Screws	2		534	Limited plate	1	